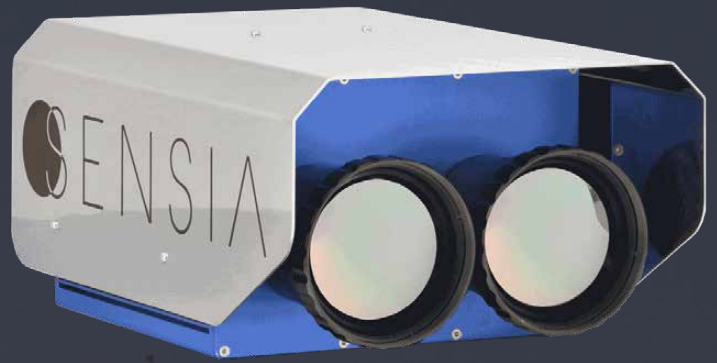


Agni

OGI for flared gases analysis



HxCx

CO₂

Agni is SENSIA's bispectral fixed system specially designed for 24/7 monitoring of pilot flames and flared gases.

It quantifies the Destruction & Removal Efficiency of any pilot flames making Agni the newest equipment capable of contributing to a safe and efficient operation.



Redlook Camera
AI Analytics



Integration
Rest API, Cloud Services, IoT



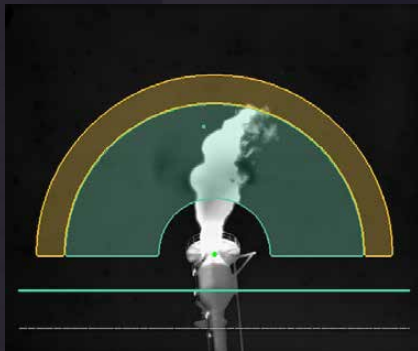
ATEX Certification
II 3G Ex ec
IIC T4 Gc



Real Time Alarms
Modbus, OPC,
Hot Relay

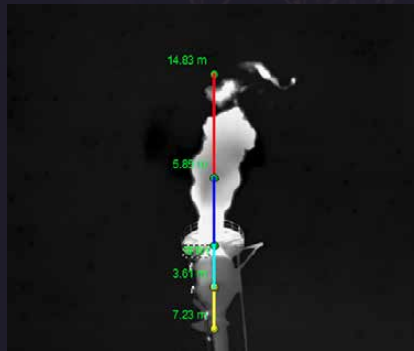
REDLOOK™ tecnologia

Redlook is fully implemented in SENSIA's line of fixed systems for 24/7 monitoring. This comprehensive monitoring system presents a series of innovative capabilities assembled under a single control software:



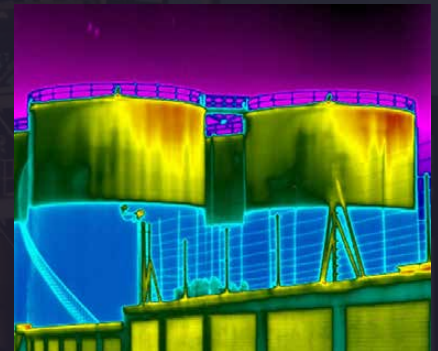
Flare Efficiency

Smoke index warning, destruction and removal efficiency (DRE) indicator



Flare Monitoring

Real time performance monitoring and early detection of liquid carryover



Tank Leveling

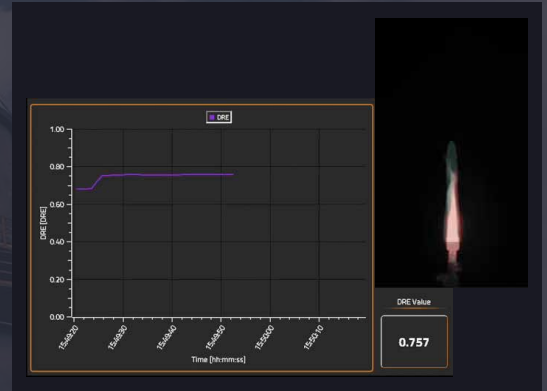
Automated tank level monitoring without opening the thief hatch



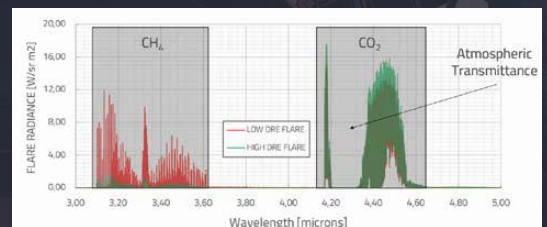
Agni performance lets Redlook enable exhaustive monitoring and real-time alerting. Highly versatile, allowing to configure several Regions of Interest (RoI) within the area to be monitored. And to each one of them, to assign a functionality, granting a total and safe surveillance of the installation.

Key features

- Maximum and minimum height thresholding
- Multi-flare monitoring
- Flare shut off detection
- Early detection of liquid spills (burning rain)



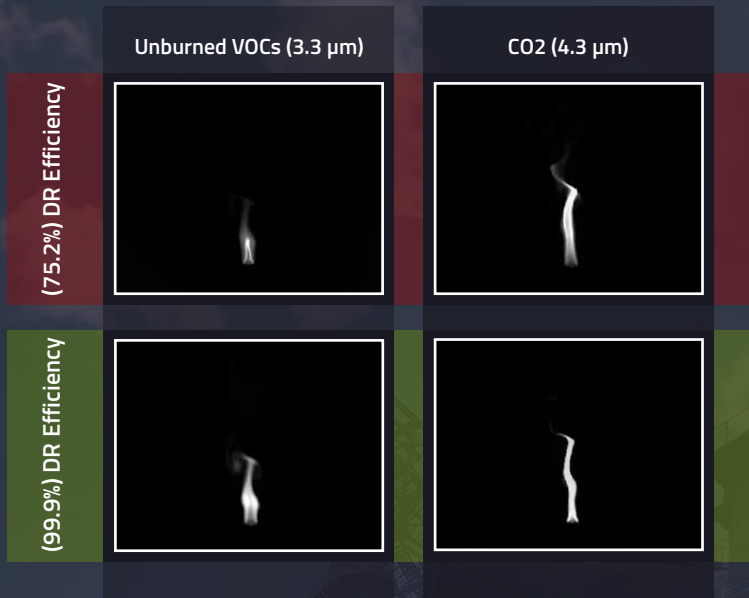
This real time functionality provides a continuous monitoring of the flare level for each the flares in the field of view of the SENSIA's thermal cameras. If an irregular event is detected an alarm will be generated.



Both the system architecture and the image processing algorithms meet the HSE needs of the industry. Redlook is fully compatible with traditional surveillance systems, taking safety and security to a new level.

Specifications are subject to change.

For the most up-to-date specifications, please contact to: contact@sensia-solutions.com



Specifications

FPA	2x Cooled 640 x 512 px
Pixel Pitch	15 µm
NETD	< 15mK @ +50°C
Lenses	50 mm 35 mm
Zoom	Digital Zoom
Accuracy	± 2°C or 2% WIG (from 100°C to 600°C)
Data Protocol	GigE 9 Hz / 25 Hz
Power	24 Watts
Weight	8 kg
Size	370 x 250x 165 mm
Operating Temp. Range	-10°C to +50°C
Storage Temp. Range	-40°C to +71°C
Certifications	IP66 (EN 60529) II 2 G Ex db op pr IIC T6 Gb II 2 D Ex tb IIIC T85°C Db EN 60079-0:2012; EN 60079-1:2014 EN 60079-28:2015; EN 60079-31:2014 IEC 60079-0:2011; IEC 60079-1:2014-06 IEC 60079-28:2015; IEC 60079-31:2013

Features under demand

Scanning	Pan & Tilt
SMART Model	Contact us for further details

HEADQUARTERS

Sensia Solutions S.L.
Av. Gregorio Peces Barba, 1
28919 Leganés, Madrid

Mon-Fri: 9:00 AM - 6:00 PM
+34 91 055 92 90 (GTM +1)

contact@sensia-solutions.com
www.sensia-solutions.com



QUALITY POLICIES

